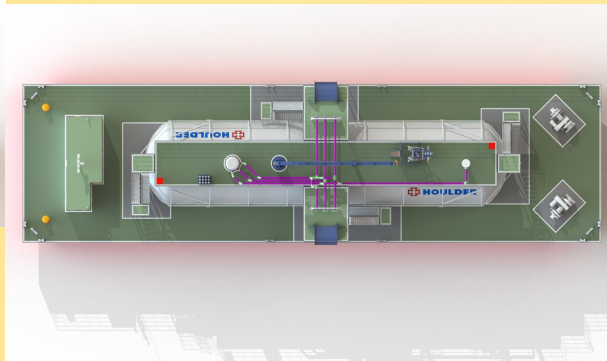


LNG Barge



By Lintech Duta Pratama
(Cryo Division)

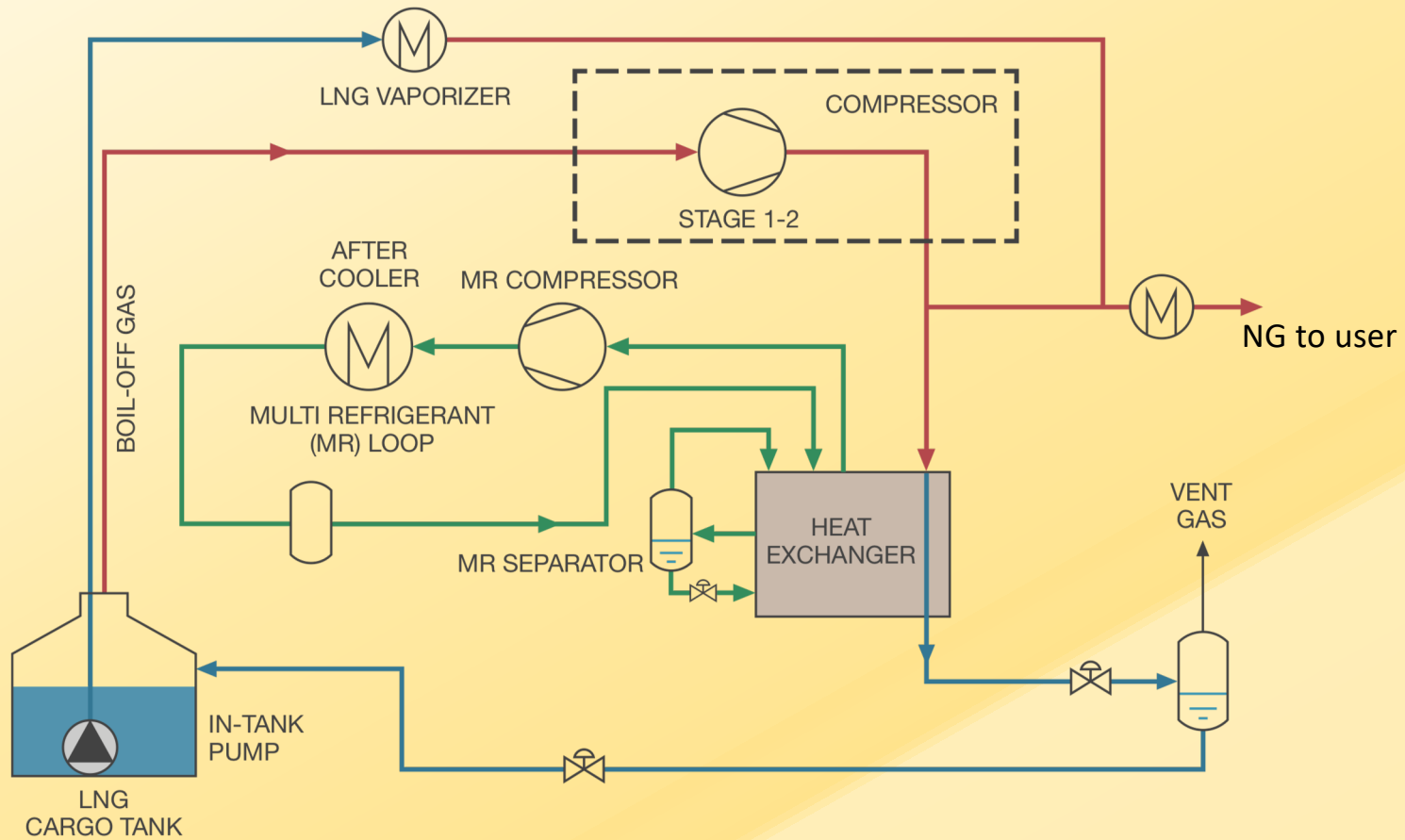


Applications

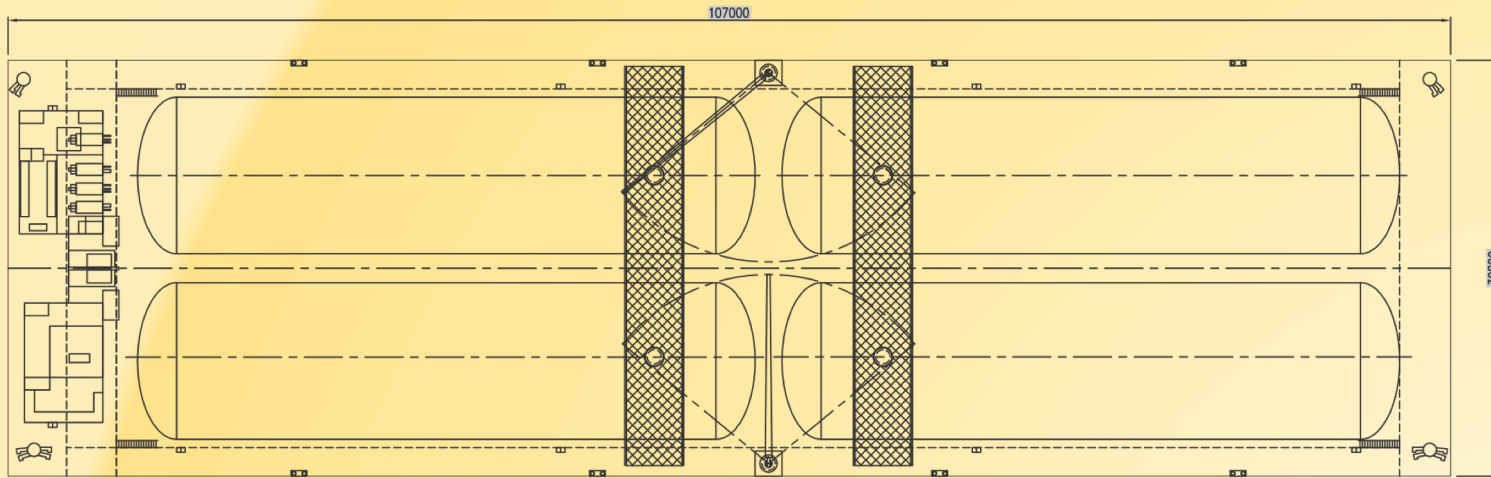
LINTECH Cryo Division can provide complete cargo handling systems for LNG barges, as well as the complete ship design package for such LNG barges.

These barges can be built solely for transport/bunkering, or can also be equipped with LNG Liquefaction, LNG Regasification, or fully integrated as LNG power systems.

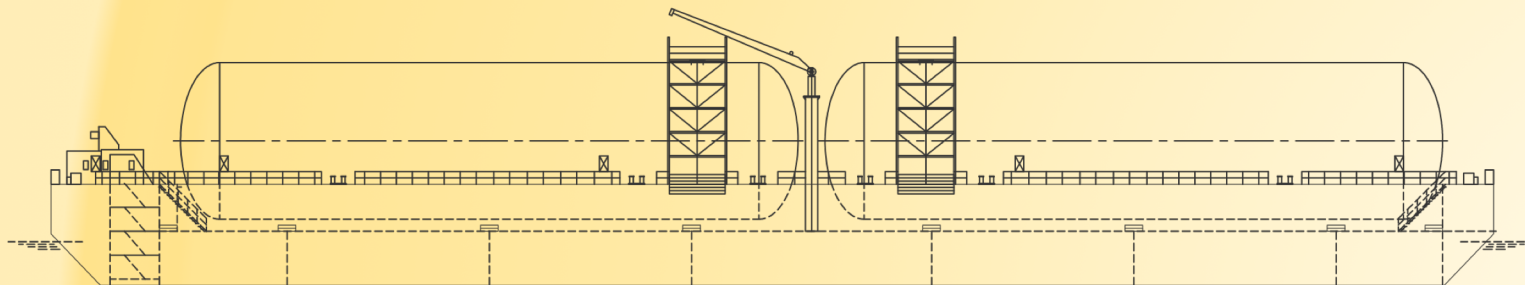
Process Flow Diagram



General Arrangement



TOP VIEW



ELEVATION VIEW

More about it

General:

- ❖ Classification by BKI / ABS / GL or other ajax member
- ❖ LNG storage tank refer to ASME sect. DIV.1

LNG storage tanks:

- ❖ Design pressure 4,5 Bar
- ❖ Material Austenitic Stainless Steel
- ❖ Vacuum insulated
- ❖ Boil of Rate approx. 0,25%/day
- ❖ Temperature range at -196 till 50 Celsius

Accommodation:

- ❖ Cargo office & Control room
- ❖ Day accommodation with change room, sanitary facilities, heating, ventilation and air cond.
- ❖ Pump Room

Key points:

- ❖ Low draft
- ❖ Its mean good flexibility to locate it
- ❖ Our design to get more effective cost and optimum results
- ❖ Integrated transfer system
- ❖ Scalable

Equipment:

- ❖ Bilge pumps
- ❖ Ballast pumps
- ❖ Seawater pumps for fire fighting
- ❖ Dry powder & CO2 system for fire fighting
- ❖ Mains Generator & Emergency Generator
- ❖ Towing Gear
- ❖ Crane for hose handling / maintenance
- ❖ Gangway with fence / gate
- ❖ Live saving (vest & buoy)
- ❖ VHF radio telephone set