



BUNATI PORT

Introduction

PT. LINTECH DUTA PRATAMA is pleased to provide concept design, equipment supply up to commissioning of bulk material handling project starting from bulk material hopper to the stock pile. The process is to convert bulk material including coal, mineral ore, general bulk conveying system to the product that meet the customer's requirement. In general, the process consists of

- **Bulk Material Hopper**
Bulk material can include coal, rocks, mineral ore, general bulk and contamination in lumps size and have a large variability of moisture and maximum particle size. Bulk raw material is delivered from mine to the hopper
- **Crushing**
Break and crush the big bulk material to the smaller acceptable size. The typical crushing devices are feeder breaker, rotary breaker, hammer mills or roll crusher

- **Screening**

Bulk material size is further reduced through a sizer. Screening is used to separate different sizes of crushed bulk material (coarse and fine bulk material) according to the specific customer's requirements. The coarse bulk material is reduced further through secondary crusher. Screening and size reducing process could be in several times depend on bulk raw material size and output size

- **Product Stacking**

Crushed and screened bulk material is stored at stockpile between the preparation plant and product load-out. This is to provide surge capacity to maintain workable product inventories and control the quality of the product going to be delivered to customer

- **Barge Loader**

The product is transported from stockpile to the barge through conveyor and barge loader system

Herewith, **PT Lintech Duta Pratama** stated our capability in Designing, Manufacture, Supply, Installation and Commissioning of the bulk material handling to meet the customer requirements or custom design. As a custom design, design that specially made to the client requirements of operational, maintenance, space, process and safety restrictions.

We are experienced EPFC company execute the bulk material handling projects with **Good Quality, Competitive Price** and **Excellent Design**. We serve solutions from initial concept design through to commissioning and manage the project within schedule and allocated budget.

Project Experiences



Martabe – Gold Mining

- Client : PT. Agincourt / Ausenco
- Location : North Sumatera, Indonesia
- Steel structure, Conveyor System and Tanks
- Capacity 1300 Tph, 4200 Ton, 466 m
- Duration : 12 Months



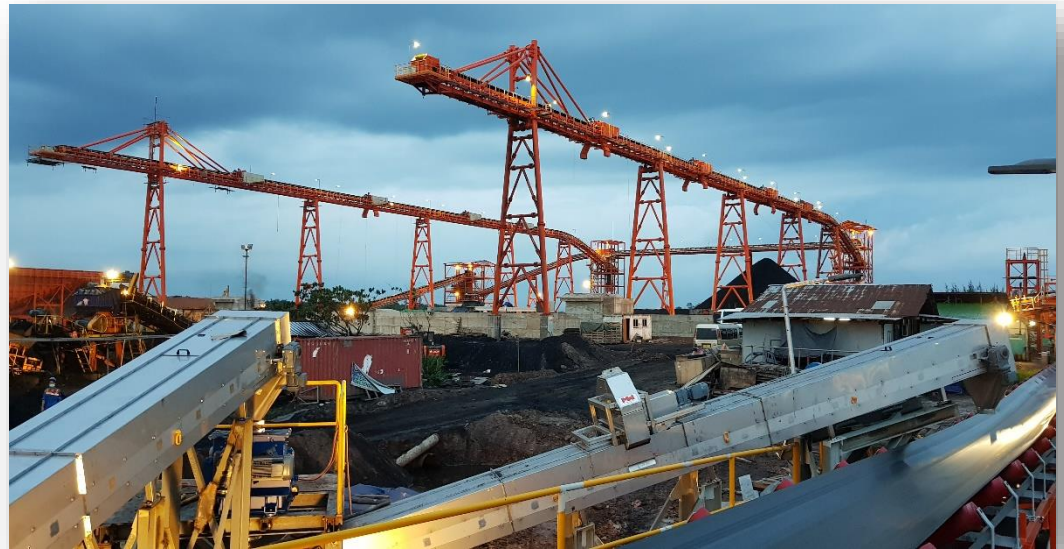
Sibelco – Lime Plant

- Client : PT. Bhumiadya Indonesia
- Location : Bandung – West Java, Indonesia
- Steel structure, Conveyor System, Tanks, Silo, Kiln, E&I
- Capacity 55 Tph, 800 Ton, 300 m
- Duration : 18 Months



Tujuh Bukit – Ore Preparation Plant

- Client : PT. Bumi Suksesindo
- Location : Banyuwangi – East Java, Indonesia
- Steel structure, Conveyor system, Tanks
- Capacity 683 Tph, 1600 Ton, 640 m
- Duration : 8 Months



East Bunati Port Expansion – Coal Plant

- Client : PT. Borneo Indobara
- Location : Bunati – South Kalimantan, Indonesia
- Conveyor System, E&I, Civil works
- Capacity 1500 Tph, 1290 Ton, 1.134 km
- Duration : 11 Months (CP6) and 8 Months (CP7)

Scope of Supply

- Design and Detailed Engineering
- Procurement and Fabrication
- Field Installation
- Testing, Inspection and Commissioning
- Maintenance (Optional)

Surface Preparation and Coating

- Sand Blasting SA 2.5
- Coating thickness
 - Primer : 75 microns
 - Intermediate : 100 microns
 - Final : 100 microns
- Standard Color
 - Frame : Blue or as request

Main Parts & Components Supply

- Dump Hopper
- Main and Secondary Crusher (Double Roller)
- Belt Conveyor
- Vibrating Screen
- Plough Tripper
- Magnetic Iron Remover
- Sampling Device
- Dust Removing Device
- Motor and Gear Box
- Hoisting Equipment

Technical Specification

As per customer specification

Workshops

PT. Lintech Duta Pratama has two (2) fabrication workshops located at Karang Pilang, Surabaya and Paciran, Lamongan

▪ **Karang Pilang – Surabaya**



- Area : +/- 2 Ha
- Activity : Warehouse, Fabrication, Surface Preparation and Painting
- Capacity : 200-400 Ton/Month
- Main Office

▪ **Paciran - Lamongan**



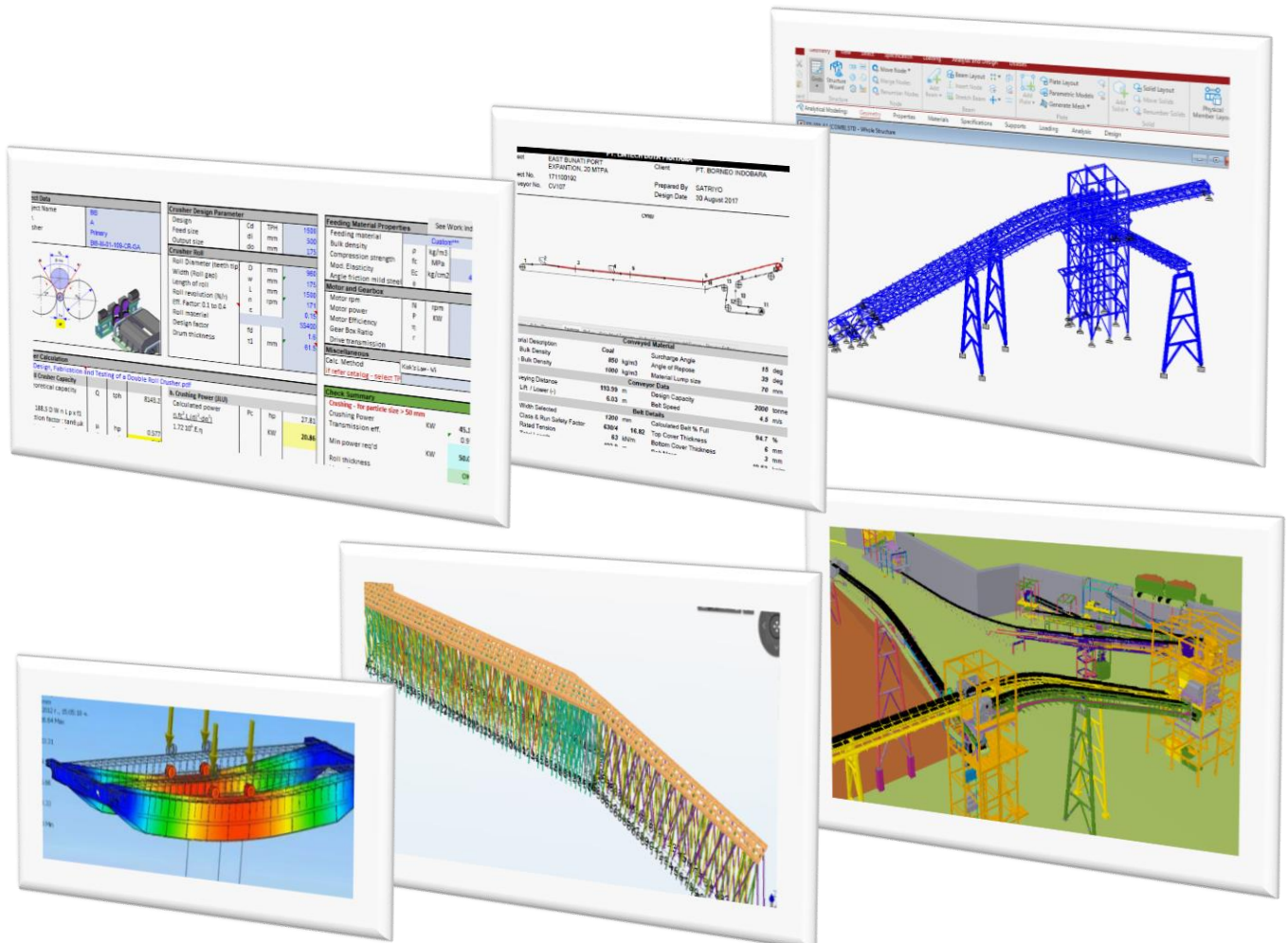
- Total Area : 65,660 m²
- Workshop : 6,982 m²
- Facility : Jetty (3000 Ton Capacity, 6m Draft), Yard Facility, Open Storage Area
- Activity : Warehouse, Fabrication, Surface Preparation and Painting, Ship Repair and Maintenance
- Capacity : 800 Ton/Month

Engineering Design

Besides skills and experiences, Our engineers are completed with licensed technical softwares to growth and shape engineering technology and increase the design capability for optimizing design

Licensed Technical Softwares:

- Helix Conveyor
- STAAD.Pro
- Tekla Structural Designer
- Autodesk AutoCAD
- Autodesk Inventor
- Developed Spreadsheets



BULK MATERIAL HANDLING

**Any inquiry, Please don't hesitate
to contact us**



www.lintech.co.id
www.lsf.co.id
admin@lintech.co.id

Thank You